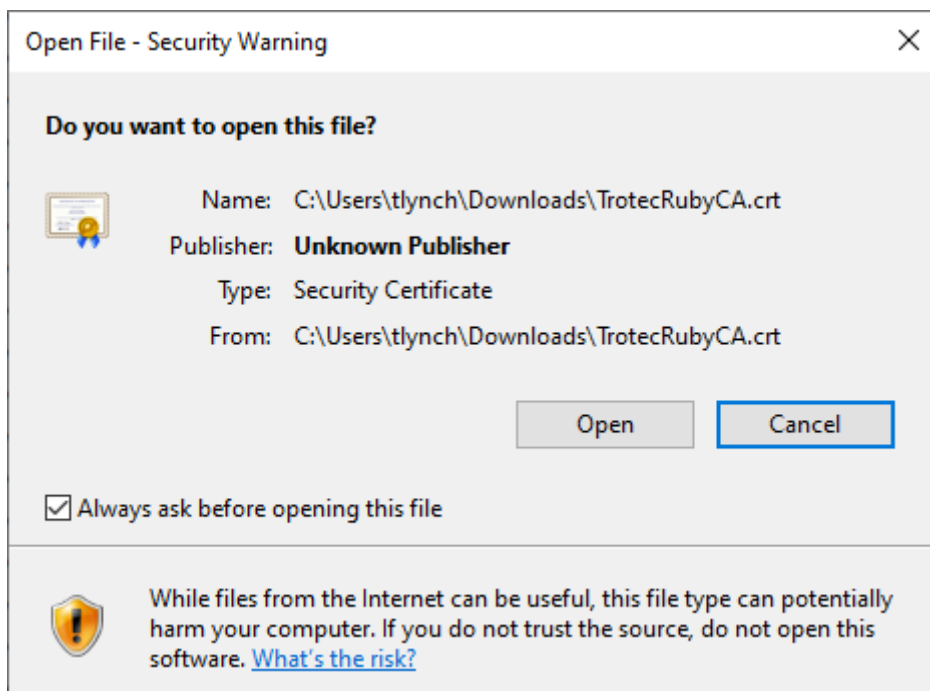


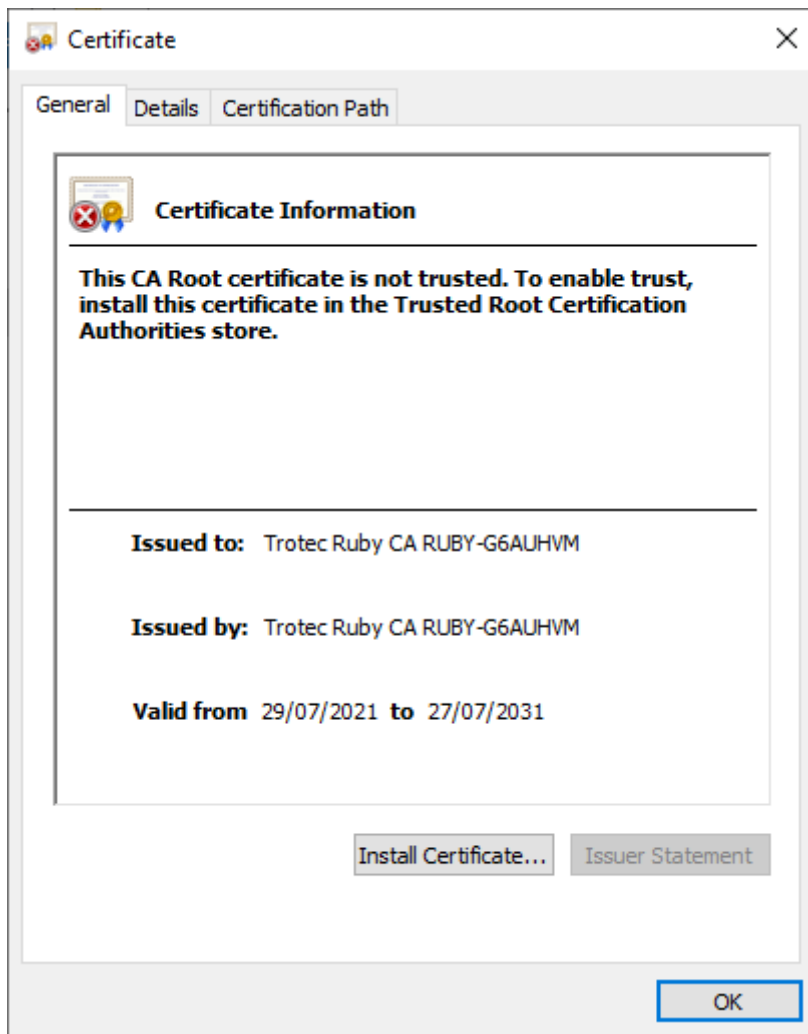
How to trust Trotec Ruby certificate on Windows 10

This guide will show you how to trust the Trotec Ruby certificate on Windows 10 to avoid security warnings.

1. [Download the certificate](#) (Right click, Save As)
2. Locate the `TrotecRubyCA.crt` file in your downloads and open it.
3. Windows will ask you to confirm if you want to open the file, press open.



4. Windows will show you the details of this security certificate and say it is not trusted. This is because the certificate is issued by Trotec, rather than a global certificate authority. This normal and the certificate should still be installed.



5. Install the certificate on the "Local Machine" and press Next.



Welcome to the Certificate Import Wizard

This wizard helps you copy certificates, certificate trust lists, and certificate revocation lists from your disk to a certificate store.

A certificate, which is issued by a certification authority, is a confirmation of your identity and contains information used to protect data or to establish secure network connections. A certificate store is the system area where certificates are kept.

Store Location

- ☐ Current User
- ☒ Local Machine

To continue, click Next.

 Next

Cancel

6. Click "Place all certificates in the following store" and select browse.



Certificate Store

Certificate stores are system areas where certificates are kept.

Windows can automatically select a certificate store, or you can specify a location for the certificate.

- ☒ Automatically select the certificate store based on the type of certificate
- ☐ Place all certificates in the following store

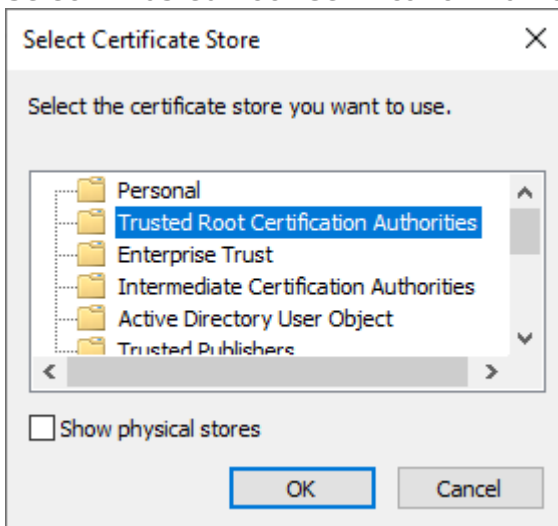
Certificate store:

Browse...

Next

Cancel

7. Select "Trusted Root Certification Authorities" and press OK.



8. Press next.



Certificate Store

Certificate stores are system areas where certificates are kept.

Windows can automatically select a certificate store, or you can specify a location for the certificate.

- ☐ Automatically select the certificate store based on the type of certificate
- ☒ Place all certificates in the following store

Certificate store:

Trusted Root Certification Authorities

Browse...

Next

Cancel

9. Press finish to complete the installation of the certificate.



Completing the Certificate Import Wizard

The certificate will be imported after you click Finish.

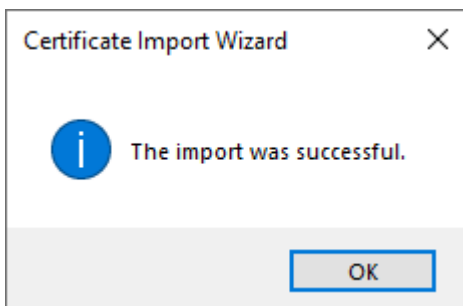
You have specified the following settings:

Certificate Store Selected	Automatically determined by the wizard
Content	Certificate

Finish

Cancel

- Windows will take a few moments and then confirm the outcome. You can now press okay to this prompt and close the certificate information window.



- Reboot your computer.

Revision #4

Created 19 January 2022 22:45:55 by Tom Lynch

Updated 21 December 2023 23:41:07 by Tom Lynch